

OLYMPUS®



EVIS EXERA GASTROINTESTINAL VIDEOSCOPE
OLYMPUS GIF TYPE 160

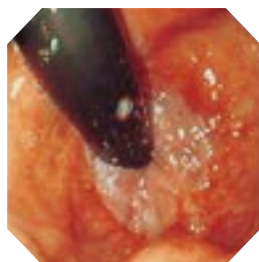
IDEAL FOR ROUTINE EXAMINATIONS

With its narrow 8.6 mm diameter insertion tube
and wide 2.8 mm diameter channel,
this scope offers high image quality, expanded field of view,
and great depth of field you need
for routine examinations




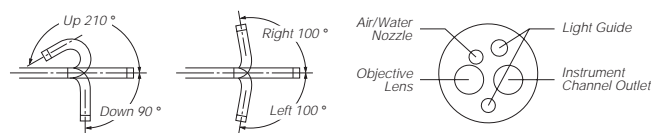
Main Features for Excellent Performance

- 8.6 mm outer diameter insertion tube and 2.8 mm channel diameter combined with excellent image quality to make this scope ideal for routine examinations.
- Extra-wide 140° field of view enables wider area of site to be easily observed.
- 4-way angulation (210° up, 90° down and 100° right/left) enables complete and comprehensive examination of the upper digestive tract.
- Ergonomically designed grip enhances scope maneuverability while redesigned easy-to-access knobs and user-selectable switches improve operability.
- Superior image quality is delivered even in the expanded full height mode when combined with the dedicated CV-160 video system center.
- Fully compatible with the CV-160/140/100.
- Scope ID function stores individual scope information and displays it on the monitor to facilitate endoscopy suite management.

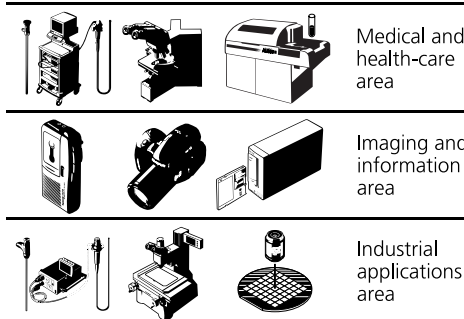


Specifications

Optical System	Field of view	140°
	Direction of view	0° Forward viewing
	Depth of field	3 to 100 mm
Distal End	Outer diameter	8.6 mm
Insertion Tube	Outer diameter	8.6 mm
Bending Section	Angulation range	Up 210°, Down 90°, Right 100°, Left 100°
Working Length		1030 mm
Total Length		1345 mm
Instrument Channel	Inner diameter	2.8 mm
	Minimum visible distance	3 mm from the distal end
	Endo-Therapy accessory entrance/exit position in field of view	



Olympus business areas



OLYMPUS
FOCUS ON LIFE

<http://www.olympus.com>

OLYMPUS OPTICAL CO., LTD.

San-Ei Building, 22-2, Nishi-Shinjuku 1-chome, Shinjuku-ku, Tokyo, Japan

OLYMPUS OPTICAL CO. (EUROPA) GMBH

Postfach 10 49 08, 20034 Hamburg / Wendenstrasse 14-16, 20097 Hamburg, Germany

OLYMPUS AMERICA INC.

2 Corporate Center Drive, Melville, N.Y. 11747-3157, U.S.A.

OLYMPUS KEYMED

Keymed House, Stock Road, Southend-on-Sea, Essex SS2 5QH, England

OLYMPUS SINGAPORE PTE LTD.

491B River Valley Road #12-01/04, Valley Point Office Tower, Singapore 248373

OLYMPUS BEIJING REPRESENTATIVE OFFICE

Rm. 818, South Tower, Beijing Kerry Centre, No.1 Guanghua Road, Chaoyang District, Beijing, 100020, China

OLYMPUS MOSCOW LIMITED LIABILITY COMPANY

117071, Moscow, Malaya Kaluzhskaya 19, bld. 1, fl.2, Russia

OLYMPUS AUSTRALIA PTY. LTD.

1/104 Ferntree Gully Road, Oakleigh, VIC 3166, Australia