

PM-60

Pulse Oximeter

Technical Specifications

Safety

Meet the requirements of IEC60601 series, CE marking according to MDD93/42/EEC

Type of Protection Class II with internal electric power supply
 Degree of Protection BF (defibrillation proof)
 Protection Against Ingress of Liquid: IPX2

Dimension and Weight

Dimension 55(W)X120(H)X30(D)mm
 Weight Maximum weight 300g (With battery)

Operation Environment

Temperature 0~40°C
 Humidity 15~95%(non-condensing)

Storage Environment

Temperature -20°C ~ +60°C
 Humidity 10% ~ 95% (Non-condensing)

Performance Specifications

Display 2.4" color TFT
 Resolution 320×240
 Multi displays selectable Standard screen display
 Waveform display
 Trace 1 plethysmogram waveform
 Indicator Alarm indicator light
 Power indicator light
 Pulse tone
 Alarm sound
 Button tones
 Interface One dual-purpose socket for connecting SpO₂ sensor and communication cable.
 IR interface Infrared link allows downloading realtime patient data to computer
 DC Power interface Charger stand for Li-ion battery
 DC Power Requirements Input voltage 5VDC
 Power 1.2A
 Battery *Li-ion Battery*
 2 hours for charging;24 hours for continuous working

Order Information

Part Number	Description
0852B-01000	Main unit (with standard reusable sensor)
0852-10-77701	Carrying case
0852-21-77412-53	Protective cover
0852-30-77503	Battery charging kit (Euro)
0852-30-77504	Battery charging kit (US)
0852-30-77505	Battery charging kit (UK)
0852-30-77531	Pole mounting kit
0852-30-77491	Data management kit

Partial list of choices, for more details please refer to the price list.



MINDRAY™

Mindray Building, Keji 12th Road South, High-tech Industrial Park,
 Nanshan, Shenzhen 518057, P. R. China
 Tel: +86 755 2658 2888 2658 2492 Fax: +86 755 2658 2680
 E-mail: intl-market@mindray.com Website: www.mindray.com

Trend memory AA batteries (for 3 pieces)36 hours for continuous working
Monitoring mode
 Resolution: 2s
 Maximum time: 96h
Spot-Check mode
 Review of up to 4,000 data;
 measure up to 99 patients
 User-adjustable High and Low limits
 3-level audible and visual alarm

Alarm

SpO₂
 Measurement range 0~100%
 Resolution 1%
 Accuracy ±2%(70~100%,Adult/Pediatric)
 ±3%(70~100%,Neonate)
 0~69% unspecified
 Alarm range 50~100%
 Refreshing rate 1 s
 Averaging time 7 s (Sensitivity set HIGH)
 9 s (Sensitivity set MED)
 11 s (Sensitivity set LOW)

Pulse Rate
 Range 18~300bpm
 Resolution 1bpm
 Accuracy ±3bpm(non-motion)
 ±5bpm(motion)
 Alarm range 18~300bpm
 Refreshing rate 1 s
 Averaging time 7 s (Sensitivity set HIGH)
 9 s (Sensitivity set MED)
 11 s (Sensitivity set LOW)

Selectable Sensors



DISTRIBUTOR:



PM-60

Pulse Oximeter



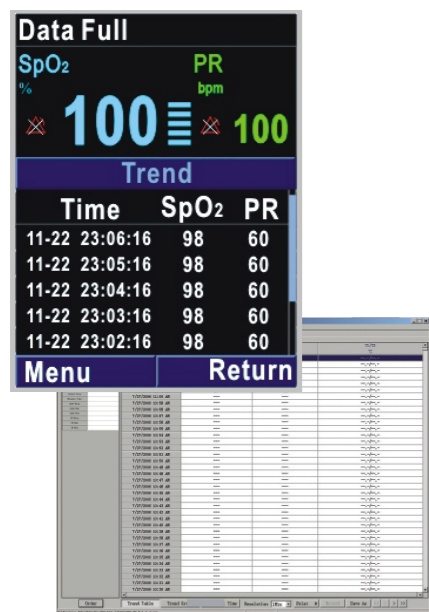


Spot Check Mode

- Auto-standby and power off during the idle status
- Auto-increase the patient IDs
- Non-alarm setting for "sensor off" occasion

Continuous Monitoring Mode

- Regular alarm handling
- Enable to input patient ID manually
- View SpO₂ waveform



Data Storage and Management Functions

For you to easily keep and view patient data.

- Spot check: 1~99 IDs with total 4000 sets of measurement
- Continuous monitoring: maximum 96 hour trend

All data can be transferred to a PC through a Windows-based software for review and regular printing.

- Suitable for adult, pediatric and neonatal patients
- High resolution 2.4" color LCD display
- Two selectable working modes: spot check and continuous monitoring
- Adjustable audible and visual alarms
- Real time data transfer by infrared technology
- Batteries to support up to 36 hour continuous working
- Protective cover and carrying case perfect for portable monitoring needs



Protective Cover



Carrying Case



Charger Stand