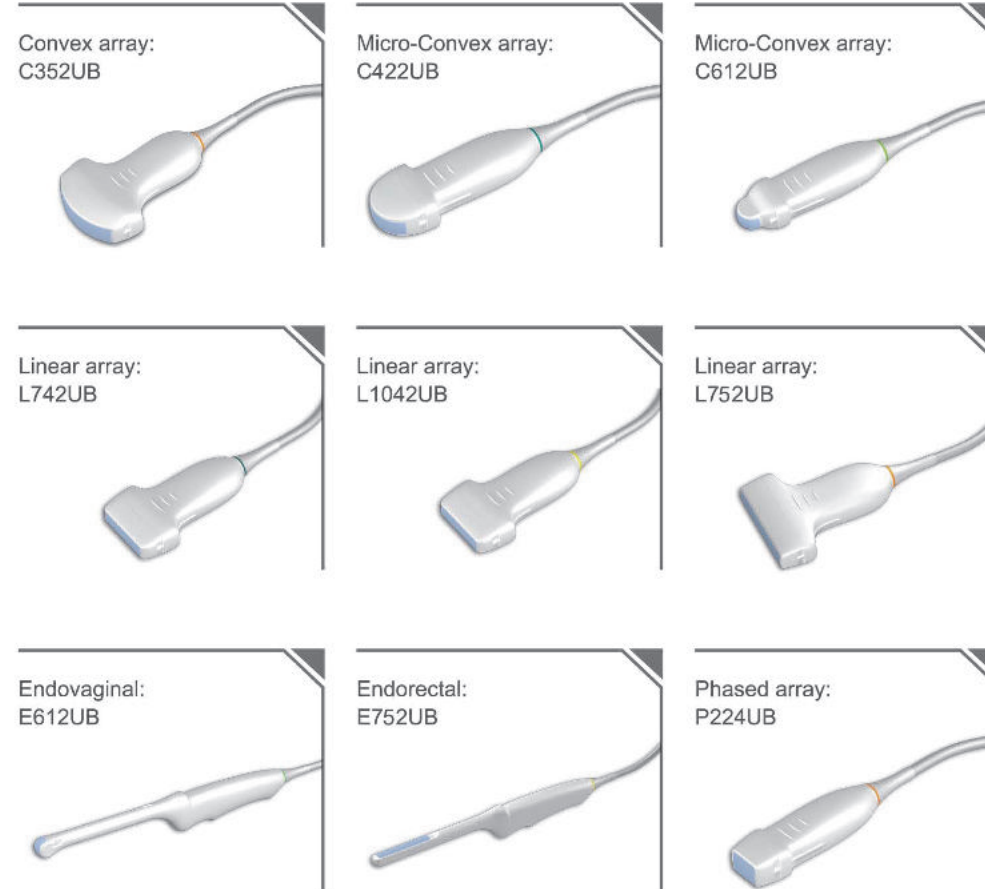


U50

Pioneer
the
Popularization



➤ Transducers

Through more than ten years' technology accumulation and development, EDAN are committed to using the existing mastery to deliver the wide range transducer selection. Our entire endeavor offers U50 more flexibility and reliability.



EDANUSA
www.edanusa.com



U50

Pioneer the Popularization



EDANUSA

4901 Morena Blvd., Suite 505
San Diego, CA 92117
Tel: 888.850.4597

U50

Pioneer
the
Popularization

Care for Health



> Features

U50 characterized with ergonomic design and user-friendly workflow makes everything under your control just in palm size.

- Genuine compact size promotes mobility
- LED backlight screen enhances visual experience
- Built-in extended battery life realizes point-of-care scene
- Large capacity integrated hard disk expands data storage



12.1" high resolution
LED display

Built-in lithium battery for
2 hours' continuous work

Light-weight design for
excellent mobility

Unique gel holder design

Abundant peripheral
ports: VGA,USB,
DICOM,etc.



Backlit control panel

Quick save
simplifies the operation

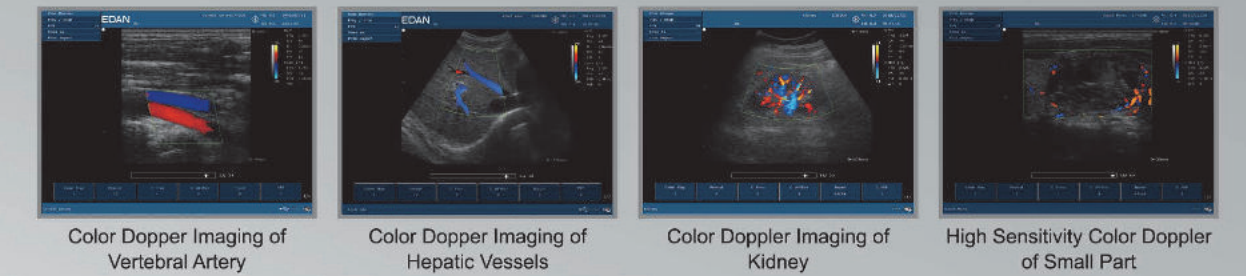
Power doppler imaging

Color doppler flow imaging

Pulse wave doppler

> U50

U50 has been well designed based on sophisticated survey of the real needs from specific target group. The accurate product orientation and optimized technological integration ensure U50 exert authentic accounts to pioneer the popularization.



Color Doppler Imaging of
Vertebral Artery

Color Doppler Imaging of
Hepatic Vessels

Color Doppler Imaging of
Kidney

High Sensitivity Color Doppler
of Small Part



Transvaginal 2B Scan of Ovary



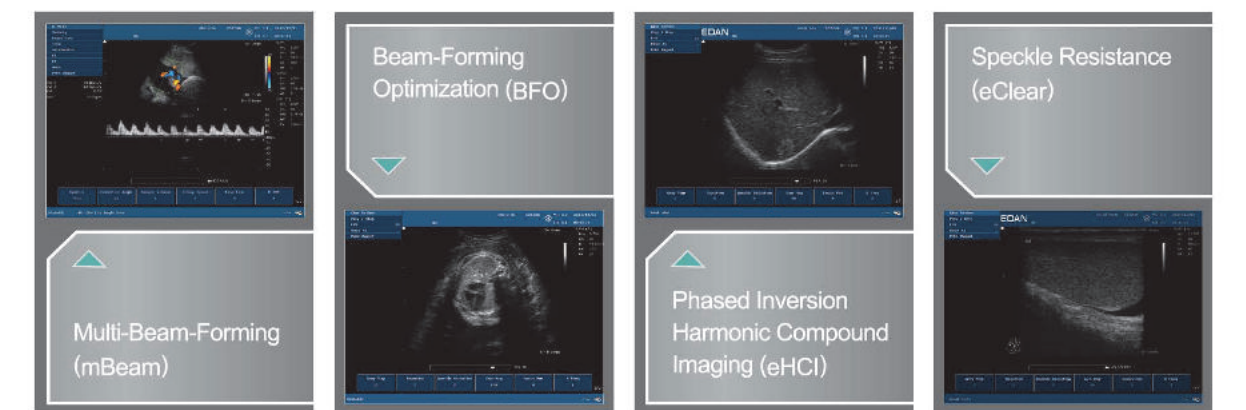
Transvaginal Scan of Fetus



Harmonic Imaging Shows Near
Field details

> Technologies

U50's advanced image technologies and dependable functionalities are essential to facilitate a sharp image acquisition and increase diagnostic confidence.



Beam-Forming
Optimization (BFO)

Speckle Resistance
(eClear)

Multi-Beam-Forming
(mBeam)

Phased Inversion
Harmonic Compound
Imaging (eHCI)